

April 13-1906

Survey of land for B.F. Pierce

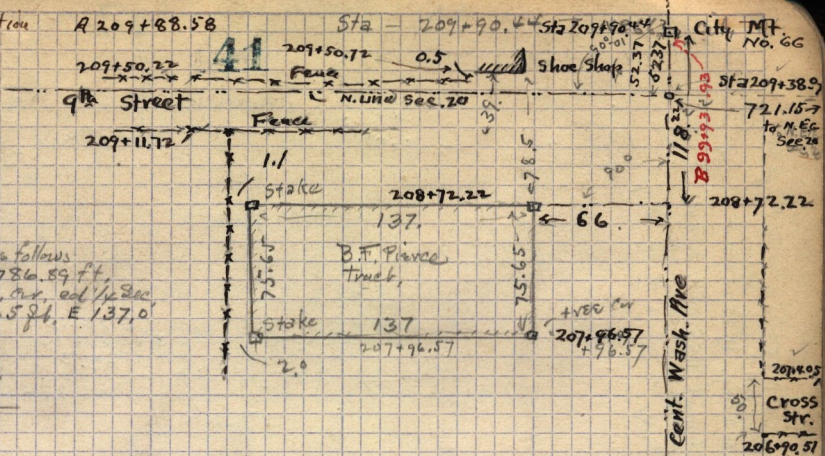
of land in N.E. 1/4 Sec. 20, T. 6,  
N.-R. 1, W.

Description furnished by Pierce as follows  
 Beg. on W. line Washington Ave 786.59 ft,  
 West 2nd 65.35 ft. S. from N.E. cor. ead 1/4 Sec  
 thence west 137.0 ft. S 75.65 ft. E 137.0  
 ft. N 75.65 ft. to beg.  
 Tom Fenwick's cost.

See field book H, pgs 39-40 for  
 original notes of the N line of this  
 Sec, as run by me.

See also page 93 for  
 survey in this vicinity

also page 118 -  
 Book D, p. 119 - for Cross Str.



Sta 193+54.16

Co. M + No 3  
 12th St.